

Let's Invest in San Bernardino County

Yes on 15

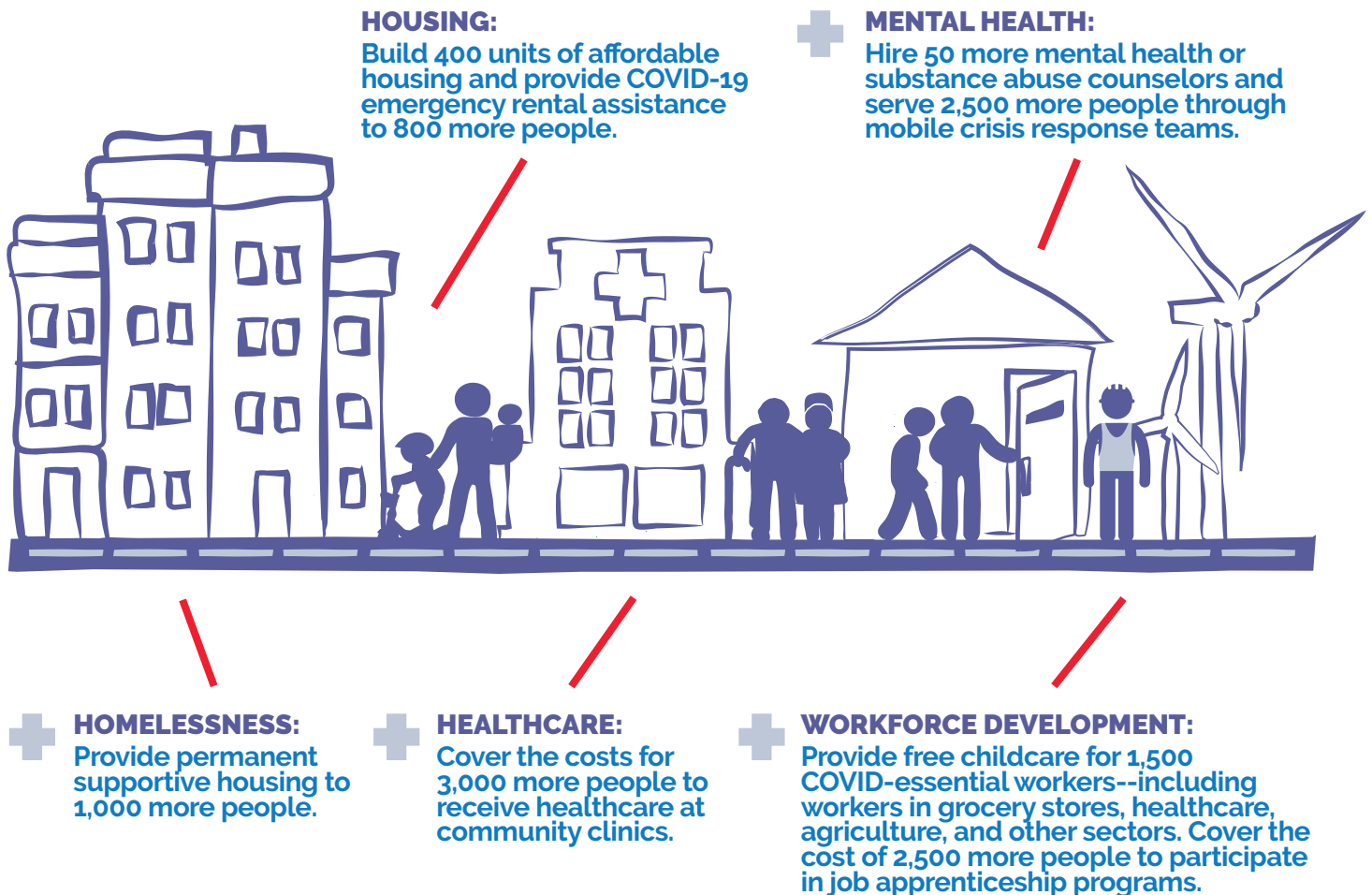
SCHOOLS & COMMUNITIES FIRST



Prop 15 will reclaim \$12 billion every year for California schools, community colleges, and essential local services like housing and healthcare – and every county will benefit. COVID-19 has shown how decades of disinvestment in public health and social services has deepened inequities and worsened the crisis. Let's reclaim these resources, and provide the support our local communities need to thrive.



In San Bernardino County alone we can restore **\$620 million** each year, with \$307 million for public education and \$312 million for community services. Imagine all we can invest in community services each year:



YES on PROP 15!

Prop 15 was put on the ballot by a record-breaking 1.7 million Californians who believe that wealthy corporations need to pay their fair share.

Human Impact Partners developed this infographic in collaboration with Schools and Communities First. Visit humanimpact.org for details on methodology and data sources.

yes15.org